



THE REGULAR MEETING of the Gem, Lapidary, and Mineral Society of Montgomery County MD., Inc. is on Monday, November 13 in the dining room of the Rockville Senior Center, 1150 Carnation Drive, in Rockville. Meetings are held the 2nd Monday of the month from September to June. The business meeting will begin at 7:45 PM but the room is available to us at 7:30 PM so come early and see what you and others have on the Show Table, check sale items, and chat with old friends. The program will be “Sands of the World and Their Many Uses” by Michael Colella, a member of the GLMSDC. The remaining Paul and Jennie Smith specimens will be for sale. There will be another silent auction, this time lapidary material donated by Jim Greenlees. See page 4 for a listing.



THE BOARD OF DIRECTORS Will meet on Monday November 20 at 7:30 PM at the home of David and Nancy Ballard. Any member is welcome to attend but please let Nancy know if you plan to attend.

ROSTER UPDATE New Members: A GREAT BIG Welcome!

- CELMER, Andrew & CRONIN, Patricia, 4798 Mid County Court, Monrovia MD 21770-9417, abcpec@adelphia.net, 301 865 4442
 BYRNE, Kevin & Patricia REPIK-BYRNE, 9 Starlight Court, Potomac MD 20854-2658, Kevin_Byrne@comcast.net, 301 279 5962
 DAHLMAN, Mark & Rebecca, 11906 Scovell Terrace, Germantown MD 20874-2532, mddahlman@yahoo.com, 301 428 0455, Annie (8/02)
 KINDAHL, Eric & WILSON, Robin, 301 Violet Court, Mount Airy MD 21771-5206, kindahl@hood.edu 301 829 2161, Alexandra (9/96)
 MUIR, Andy & Denise, 17949 Hazelcrest Drive, Gaithersburg MD 20877-3761, amuir21@comcast.net, 301 990 1370, Savannah (7/95), Gabi (8/97)
 NAGY, Jeffrey, 25115 Kings Valley Rd., Damascus MD 20872-1636, JWNagy@comcast.net, 202 549 2353
 PORTER, Leslie, 825 Brice Road, Rockville MD 20852-1001, leslie.porter2@verizon.net, 301 251 5166
 SAYTHER, George, 13608 Crusader Way, Germantown MD 20874-6207, wyandwinot@yahoo.com, 301 515 1219
 WARFORD, Jane, 3409 Kemptown Church Road, Monrovia MD 21770-8707, pjwarford@mac.com, 301 253 8842



Changes:

- ABELOW, Christine, New E Mail Christineabbey76@aol.com
 CHARSKY, Jean, Delete senior member
 DURLAND, Eric & Alison, 12607 Bluhill Rd., Silver Spring MD 20906-4102
 MENY, Ellen, Delete junior member
 MICHAELIS, Christian, change status from junior to senior member

GET WELL THOUGHTS Lillian Turner, Society friend, suffered a severe stroke about two months ago and, after a hospital stay, is still in the Hebrew Home for rehab. She turned 89 on October 14th and many close friends and family members paid her a visit.

DEADLINE for the December Rockhouser is November 26, 2006

IN THIS ISSUE	
Meeting Announcements, Roster Update, Get Well, Dec. Deadline.....	1
Birthdays, Regular Meeting Minutes, Board Meeting Notes.....	2
Board Meeting Notes Continued, October Show Table.....	3
Field Trips, Oct. Prizes, Min. of the DC Area, New Club Address, Collecting Master, Sale, Auctions.....	4
Safety Rules, Library, Bumper Stickers, AFMS, EFMLS Newsletters....	5
Educational Opportunities, Events.....	6
Rockhunting in a Weird Way, Elections,	7
Nat. Geo. & AMNH Exhibits.....	8
Web Sites, Show Calendar.....	9

HAPPY BIRTHDAY Members with Birthdays in November: Patricia Cronin, Eric Durland, Chuck Mason, Audrey McElravy, Michelle Michaelis, Wendell Mohr, Laurence O'Callaghan, Ann Post, Dan Spielman, David Wood,



The birthstone for November is Topaz, a unique crystal that seems to be easily confused with citrine and aquamarine. However, that is only by its appearance. The composition of Topaz, puts it into a class of its own. Topaz is a fluosilicate of aluminum, $AL_2SiO_4(F,OH)_2$. Topaz has a luster that is adamantine to vitreous. Its crystals are transparent to translucent. It crystallizes in the orthorhombic crystal system and has perfect cleavage (Basal) in one direction. Topaz has a hardness of 8. It has a notably high specific gravity at 3.4-3.6. It is the hardest silicate mineral and is one of the hardest minerals that there is. Colors range from yellow to orange, red, blue, green, or colorless. It is excellent as a gemstone, but is also used in industry because of its optical properties. As a gemstone, Topaz is usually faceted. Topaz is primarily found in Brazil, Pakistan, Russia, Mexico, Utah, and California. So, you lucky folks that have a November birthday have a very special birthstone to brag about to those less fortunate! Adapted from an article by Jon North, Nov. 2005, Nevada County (California) G&M Society



REGULAR MEETING MINUTES October 9, 2006. President Braley called the meeting to order at 7:42 PM. There were about 44 people in attendance. The September Regular and Board Meeting minutes were unanimously approved. Free Meckley specimens were available. Anita Lizas James reminded about the Rockville field trip on October 22 and the \$5 associated fee. Wendell Mohr reviewed coming events including a Gaia Theory Conference at George Mason University, G&M shows, and The EFMLS Annual Meeting and show in West Palm Beach FL. He urged members to be planning their exhibit for our show March 10 & 11, 2007.

Rod Towers introduced the speaker, John C. Mars of the USGS who presented an excellent slide show about remote sensing. The techniques of infrared and multi spectral frequency scanning for three schemes yield information about the elemental make up of surface rocks and are useful in geo-environmental work. Scanners detect absorption spectra and give information on Potential ore deposits. Additionally geological investigations can be made on such things as mine waste and selenium poisoning of cattle. Scans are best made at noon on cloudless days. He also showed the results measuring the effect of warming on surface lakes and coastal erosion in the far north over time. The talk ended at 9:02 PM followed by a break during which a silent auction and the sale of Paul and Jennie Smith minerals took place.

The meeting reconvened at 9:26 PM at which time nine visitors (Plus spouses and children) were unanimously elected to membership. Nancy Ballard reported for Juan Proaño, Treasurer, that we are in good shape money-wise. Scott appealed for candidates for elected office and for committee work.

Show table participants told of their displayed items and prizes were awarded. The meeting was adjourned 9:54 PM. Robert Winfield, Secretary

BOARD MEETING MINUTES October 16, 2006. The meeting was called to order at 7:36 PM by President Braley. Board members present: Scott Braley, George Durland, Wendell Mohr, Joel Rosen, Rod Towers, and Bob Winfield. Members present: Dave and Nancy Ballard. It was unanimously voted that Wendell Mohr would be the Society Delegate to the EFMLS meeting in Florida. Scott, an EFMLS Director, will be unable to attend. Scott has agreed to stand for re-election as President and Juan Proaño is willing to continue as Treasurer. The Board of Directors, acting as the Nominating Committee, discussed possible candidates for Vice-President and Secretary positions. Scott agreed to make contacts with selected people. He will also make contacts for key committee leadership. Nancy Ballard agreed to be Membership Chairman and Joel Rosen will continue as Property Manager. Show Chair, Show Exhibits Chair, Junior Advisor, and Science Fair Chair positions need to be filled. Show tasks were discussed. Scott will be responsible for getting dealer contracts out. (Continued on Page 3)



BOARD MEETING MINUTES (Continued from Page 2). George Durland did a great job of getting the show fliers done. Charlie Zellers will again handle the Show Post card mailing list task. We need someone to handle the security contract and another person to arrange the table and chair rental.

The projection screen (About \$200) we bought and presented to the Rockville Senior Center has been stolen. The board proposes no action on the issue. So far there has been no response to the 501-C-3 filing. Pay Jayne advises it might be eight months to hear.

Rod Towers announced the November speaker will be Michael Colella on "Sands of the World and Their Many Uses". Rod will chair the November meeting when Scott is unable to attend.

Field trips were discussed. Member, Michael Ciletti is "outdoor" field trip chair for the GLMSDC and it might be possible to coordinate some joint trips with him. GLMSDC has a separate "indoor" field trip chair.

Wendell will revise the Society brochure. He also will prepare some jewelry material for silent auction in Nov. Wendell reported that Harvey Lindenbaum found GLMSMC Show papers covering about 6 years and was to send them to Juan. Juan feels that membership dues should be paid to the Membership Chairperson, it will remain so. Wendell received information from the Montgomery Area Science Fair, which it turns out, will have March 17, 2007 as their date at the Fairgrounds (Our show traditional weekend). Since that event is after our show this year, it was decided not to pay for an advertisement in their program. We also need to get a Science Fair Judging Chair and committee. Wendell said that he has added Frederick and Hagerstown Community Colleges' Geology Departments to his E Mail list for program announcements.

Joel Rosen had proposed that he be allotted \$1100 for the purchase of prizes. It was determined that this will cover September 2007-June 2008. He suggested that he be able to make the purchase at the NOVA Show in November so that specimens can be included in a showcase at our March Show. Discussion included the fact that there are not sufficient specimens of appropriate quality in the remaining Smith and other material. Authorization was voted by the board with all in agreement except one abstention.

Nancy Ballard noted that two people wanted Society name badges. Arrangements will be made for them to contact the badge maker and pay them directly. She also noted that it was quite some distance to get mail from the club P. O. Box on Viers Mill Road. Wendell agreed to check the availability and cost to get a box at the Old Town Gaithersburg Post Office, which would be convenient for him to make the pickups. He will check with Juan on the status of the present account.

Bob Winfield raised the issue of renting a dolly or dollies to move tables on both floors of the Show. Joel is concerned with the trailer space to store more stuff. Meeting adjourned at 9:20 PM. Notes by W. Mohr

OCTOBER SHOW TABLE:

* = Self Collected or made

Paul Braley: Quartz, Diamond Hill SC.

Scott Braley: Pyrite, Navajun, Spain, Calcite*. Pinesburg Quarry, Williamsport MD.

George Durland: Microcline, Northern Pakistan, Orthoclase, Turmig, Skardu, Pakistan, Strontiantite, Faylor Middle creek Quarry, Winfield PA.

Chuck Hyland: Celestite, Meckley Quarry, PA.

Matt Hyland: Calcite and Strontianite and Slate with fern fossils, Meckley Quarry, PA.

Pat Jayne: Booklet "Common minerals from A to Z" by Darryl Powell, producer of children's coloring and Activity books on minerals, and "A,B,C" mineral examples.

Alex Kindahl: Collection of Rhodochrosite, Hematite, orange Calcite, Malachite, tangerine Quartz, Aquamarine, Red and yellow-brown Crocidolite.

Eric Kindahl: Crinoid fossils*, Berrien County, MI, Horn Coral*, MI, Rocks and Minerals* from road cut, Myersville MD.

Rory McElravy: Granite, Cadillac Mountain, Bar Harbor ME.

Wendell Mohr: Fossil Sting ray barbs or stingers*, Aurora NC.

Rob Robinson: Orange Calcite*, Medford Quarry, MD.

Joel Rosen: Calcite*, Medford Quarry, Westminster MD, fluorescent Andersonite, which contains Uranium, Atomic King Mine, San Juan County, UT.

Rod Towers: Microscope and specimens.

Charlie Zellers: Malachite, Zaire, West Africa.

FIELD TRIPS No field trips are scheduled at the present time. Information: Field Trip Chair Anita Lizas James, Phone 301 652 5527, E Mail <johnjames04@comcast.net>.

OCTOBER PRIZES: Door prize winners are often a fascinating product of chance. We have had winners repeating many times. This month, the Junior Prize, a Quartz, from Hot Springs AR, was won by Paul Braley, while his father, President Scott Braley, won the General Door Prize, a Celestine, from Lime City, OH. Some would say keeping it in the family was a fix! We were happy that our brand new Junior member, Alex Kindahl, won the Show Table Prize, a Wulfenite, from Sonora, Mexico. Joel Rosen, who efficiently handles the Prizes has yet to draw his own name. Having said that, try again for November, Joel.



MINERALS OF THE WASHINGTON D.C. AREA by L. R. Bernstein, has, since 1980, been the primary booklet to have as a reference for collecting in this area. (Larry was the recipient of a scholarship given by the GLMSMC.) With 148 pages, 66 figures., and 3 plates, it is still available, as Educational Series #5, from the Maryland Geological Survey for \$5.00. At the last meeting new member Jeffrey Nagy said that he is in the process of revising the book. He has been in contact with Larry Bernstein, now living in the San Francisco area. Jeffrey is making a "Ground truth" survey and will eliminate sites that are no longer accessible. He will also add new sites that he knows about or finds. If you have recent information about localities in the book or new ones that aren't in the book and want to share that, contact Jeffrey at 202 549 2353 or his E Mail, <jwnagy@comcast.net>. This could be an opportunity for contributing to the update and benefiting many in the field.

NEW SOCIETY MAILING ADDRESS GLMSMC, P. O. Box 444, Gaithersburg MD 20884-0444. This is where all mail to the Society is received with the exception of material for the Editor.

MINERAL AND FOSSIL COLLECTING MASTER It has been suggested that the master published in September have added, under equipment, a water spray bottle. It can be used to wet specimens to clean off dirt and bring out a truer appearance of a specimen or cutting material. DON'T lick rocks, especially realgar and orpiment!

SILENT AUCTION AND SALE PROCEEDS Nancy Ballard reports that, in October, the silent auction of donations by Bob Barr yielded \$53 and the sale of Paul and Jennie Smith specimens \$85.25 to the benefit of the Society treasury. Incidentally, Jennie is now in her own apartment. Her address, for anyone wanting to contact her, is 8030 Frankford Road, Apt. 235, Dallas TX 75252-6840, phone 972 907 0889, E Mail <LonestarJennie@sbcglobal.net>.

SILENT AUCTION AGAIN! 14 lots of Lapidary material donated by Jim Greenlees include (1) Model 45CNR Lortone Tumbler [~\$93 if new] with tumbler media and rough for tumbling; (2) Findings; (3) Gem rough; (4) Silver wire (Round and square) and sheet; (5) Miscellaneous: wire, flux, bead needles, brushes, wood tongs, Proxabrushes and holders, beads etc.; (6) Cabochon templates; (7) Optivisor; (8) Tumbled stones and gem tree instructions; (9) Jeweler's saw and blades; (10) 7 Dental picks, 8 wood and 5 metal dopsticks [2 with faceted stones in progress], Tools: pin vice, scribe, pliers, calipers, mixing spatulas, dividers, steel ruler [Rusty], and round nose pliers; (11) Miscellaneous: clamps, jigs, 3 faceted stones, link chain, and diamond compound syringe; (12) Facet Cutter's Handbook and Xerox copies, Nassau Mineral Club Lapidary information sheets, Notes on chain making; (13) Box of polished cabs; and (14) Butane gas jeweler's torch. Bidding sheets will be provided for each lot. The last name entered will be the person winning the bid at the time the President calls a close to bidding.





BE SAFE - BE WELL

by Don Monroe, AFMS Safety Chair

In previous months I have submitted original articles usually dealing with issues that were current and filled a need. This month I am using material that I found in one of my old files. I do not know the author. I really wish I could give proper credit. I like the article and hope some of you will also appreciate it.

SAFETY RULES:

Jewelry making can be a most enjoyable hobby but there are certain hazards which must be avoided, and can be, by following a few simple rules.

Work Safely. You can't get by on luck.

Don't polish a wire or chain on a rotary tool without nailing the wire or chain to a board. This might wrap around the arbor and pull your hand with it.

Don't set fire to your clothing with the torch. Fuzzy sweaters are dangerous.

Don't drop the torch or fail to turn it off. An explosion might follow.

Don't pour water into acid when making pickle; pour acid into water.

Don't turn over the pickle pot or the boil pot. Keep handles to the rear.

Don't put a large piece of very hot metal in pickle. It might splash.

Don't pick up the charcoal block or hot metal until you are sure they are cool.

Don't hold a piece being drilled with your hand; the drill might slip or break or the piece might spin when the drill breaks through. Use pliers.

Don't put your fingers inside any item being polished, for example, a belt-buckle, a ring, a bracelet, etc. Hold the work being polished between finger-tips and thumb.

Don't wear rubber gloves or fingerstalls when polishing; these might wrap around the arbor.

Don't work without some protection for the eyes such as plastic goggles or a magnifying eye piece, particularly when using a rotating wire brush.

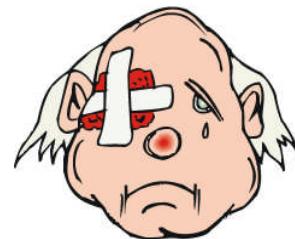
Don't let your tie or hair get caught by the rotating arbor. This could be fatal.

Don't get into contact with electricity or belts.

Don't work on a wet or damp floor.

Don't fail to report any apparent hazard immediately.

We repeat: "Work safely. You can't get by on luck!" Just fail to observe these rules and you will find your situation comparable to that of the fellow whose wife had the stone-cutter carve on his tombstone, "I told you to go to the doctor".



LIBRARY The society maintains a library containing books, pamphlets, and VCR tapes. You can ask the librarian, Jonathan Harris, to check out any item on the extensive list. Call Jonathan at 301 545 0808 or send him an E Mail at <jgharris7@comcast.net>. He will bring the item to the meeting and you can keep it for a month. If the library is not more extensively used, we will dispose of it!

NIFTY ROCK HOUND BUMPER STICKER SLOGANS

Love a Geologist – feel your earthquake.

Love a faceter – they're a cut above the rest.

Love a Mineralogist – but don't take them for Granite.

Love a beader – but they'll string you along.

Love a Paleontologist – but be aware. They collect old dead things.

Added by your editor: My next husband will be normal.



By Bob Livingston, Gem & Mineral Society of Syracuse NY

SUBSCRIPTION INFORMATION

Want your own EFMLS or AFMS Newsletter delivered to your home? Subscriptions are \$4.50 per year each. To subscribe, send a check, payable to "EFMLS" and/or "AFMS" along with mailing information (Name, address, club affiliation) to Carolyn Weinberger, Editor, PO Box 302, Glyndon MD 21071-0302. Or to read them on the internet see <<http://www.amfed.org/>> and or <<http://www.amfed.org/efmls/>>.

EDUCATIONAL OPPORTUNITIES:

Rockville Senior Center, Azalea Room, November 14, 10:30 AM-Noon, Professor McDermott, of Montgomery College, will discuss the “**Current Wave of Natural Disasters**”: Tidal waves, hurricanes, earthquakes, and tornados. Register for free course 19985 by two weeks before talk. Information: 240 314 8620 Web Site: <www.rockvillemd.gov>.

Montgomery County Recreation Dept./ Montgomery Parks M-NCPPC Register for programs on Web <<http://www.montgomerycountymd.gov/content/rec/fall2006.pdf>> or automated phone “STARline” 240 777 8277, or get booklet at Library and mail in form:

Jewelry’s Finishing Touches, Age 13 and up, 2 sessions, starting Wednesday November 8, 7-9 PM, Bauer Drive CC, Fee \$40. \$10 material fee. Donna Weeks instructor.

Glen Echo Park Information 301 634 2222 or Web <www.glenechopark.org>. Registration by mail, with check, cash, money order, or credit card or walk in. There is a \$10 Registration fee added to class fee:

Beginning Metalsmithing, Age 15 & up. Four session, Saturday, Feb 3-24, 2007, 10 AM-2 PM. Class fee \$265. Instructor Deborah Dubois.

EVENTS

Fall Rock Swap The Richmond G & M Soc. invites visitors to swap or purchase mineral, gem, fossil, sea-shell, and lapidary specimens. Free, Indoors, Saturday, November 11, 2006, Hours: 9:00 AM until 3:00 PM. At Ridge Baptist Church Meeting Hall, 1515 East Ridge Road, Richmond, VA. Parking in front of Hall. Swappers please label your specimens. For more information please contact: Murray Rosenberg, Swap Chairman 804 740-0019, E Mail <murrayrosenberg@cavtel.net> or Jim Doran RGMS President 804 288 8092. Use I-95 to Exit 79, to I-64 West. At Exit 181A go South on Parham Rd. 1.5 miles and turn left on East Ridge Rd. Church and Meeting Hall are about 400 ft. on right, across from Kroger’s Market. Hall is at rear of parking lot on W. side of Church. To defray costs swappers are asked to donate specimen(s) for raffle and auction.



Anniversary Celebration The Calvert Marine Museum's 25th anniversary is Sat., November 11th. A symposium will summarize and update the current understanding of the geology and Miocene biota of Calvert Cliffs and area, and will be held at the Museum in Solomons, Maryland. Abstracts will be compiled and printed for the Symposium and published in Club's newsletter, The EcpHora. Registration Fee: \$30.00 per person. \$20.00/person for CMM Fossil Club members. \$15.00 for full-time students. Fee includes: A boxed lunch, a buffet supper, both AM and PM coffee/juice breaks, symposium abstracts copy, and Museum admission. Reduced Registration Fee of \$5.00/person includes: Both AM and PM coffee/juice breaks, symposium abstracts copy, and Museum admission. You need not register to attend symposium presentations only. The oral and poster sessions are free and open to the public! Currently there are 17, 15-minute presentations and 3 poster presentations. So a full day on the geology and paleontology of Calvert Cliffs! The Museum will open at 8:30 am for those who have not pre-registered and for those who have to pick up their registration envelopes. Presentations will begin at 10 AM and continue until about 4:30 PM. Buffet dinner will be served in the Museum following the presentations. Staying overnight? Holiday Inn Select rate of \$76.00 plus tax. Contact the Solomons Holiday Inn directly at (800) 356.2009 ask for rooms held under "Calvert Marine Museum". Get Registration forms from Stephen Godfrey, Calvert Marine Museum, P.O. Box 97, Solomons, MD, USA 20688, or refer to Club web site <www.calvertmarinemuseum.com/events> for more information.



You’ve got to dig deep for Herkimer Diamonds. My close friend died in the effort. Yes, he’s in a better place now. . . . six feet under.

ROCK HUNTING IN A WEIRD WAY Yeah, yeah I know that it is getting a little late in the year to talk about rock hunting techniques. However, after coming back from a trip to a really large gravel pit, I would like to pass on one of my rock hunting techniques. When I go out to hunt rocks where I may be wandering over a large area I always carry a bundle of surveyors flags with me. These are the small (Say 3" by 3") bright colored flags on an 18" length of wire that people use to mark underground pipes, wires and cables. They are available at places like Lowe's or Home Depot, etc. for about \$5.00 per bundle of 50. The first thing I do with my flags is to take a big black magic marker and number them consecutively. Then I roll 25 of them into a bundle and stick them in my rock hunting sack. What I use them for is to mark a path for myself so that I will not get lost when I am in the wilds. I also use them to mark stacks of rocks that I collect so that I will not have to carry these rocks all over the place while I am looking for more. I always pick up my flags on the last pass through the area. That way you do not litter the area and I do not have to purchase more flags every trip I take. TECH TALK #13 By Val Carver, Minnesota Mineral Club Member.

Modified slightly From the October 2006 Rock Rustler's News of the MN Mineral Club.



After a heavy day's digging at the archeological site in Norway, researchers uncovered a priceless statue of the ancient Norse thunder god. He had bulging muscles and imposing stance, and of course his famous giant hammer. But most important of all, the eyes in his fierce-looking face were made of two giant rubies that glittered with a brilliant red color. Of course, the two leading archeologists on the dig were both determined that they should be the one to have their name listed on the discovery. Pretty soon, a big argument was underway. The two provided the others with a great source of amusement for the evening. By the time they finally gave up and called a truce, everyone else was feeling quite refreshed by the entertainment. As the crowd dispersed, one junior digger turned to his friend, and said: "Well, that was a fight for Thor eyes."

Q: Why can Mount Everest hear everything you say? A: Because it's covered with mountaineers!

Are you pretty well fed up with all the negative political advertising on radio and TV over the past weeks? Well you aren't going to be pestered by our candidates for office. Elections for Society leadership will be at the November meeting. The Board of Directors, serving as the nominating committee, proposes the following slate

(A metamorphic rock, used with chalk, a sedimentary rock):

For President: Scott Braley (Second term)

Vice President and Program Chairman: Harry Lupuloff

Secretary: Open (How about YOU helping with this role?)

Treasurer: Juan Proaño (Continuing)

Of course there can be nominations from the floor, but the person nominated must have agreed to serve if elected.



Heather Felsen has graciously agreed to be responsible for Exhibits at the March Show. Thanks, Heather.

Additional non-elective positions still desperately need to be filled:

- 2007 Show Chairman**
- Historian (New position)**

We really need your help and participation. Commit NOW to volunteer.

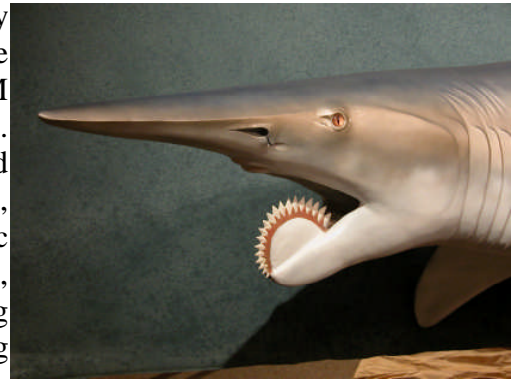
Reply to Scott Braley Phone 301 305 1193, or E Mail <ekbgsb@cox.net>

NATIONAL GEOGRAPHIC SOCIETY EXHIBIT “Bizarre Beasts: Past and Present” created by

renowned sculptor Gary Staab, of Golden, CO, open through February 2, 2007 at the NGS Explorers Hall, 17th and M Streets NW, DC. Free Admission. Open Monday through Saturday and holidays from 9 AM to 5 PM and Sundays from 10 AM to 5 PM. Closed December 25. Experience some of the strangest animals that have ever inhabited Earth: Incredible invertebrates, fantastic fish, amazing amphibians, radical reptiles, bizarre birds, and marvelous mammals. Authentic cast skeletons, touchable fossils, and realistic models. This hands-on, interactive exhibit explores how and why animals adapt to changing environments. The animals of the exhibit bring to life things looking like something out of science fiction, each of them ran, swam, flew, or or crawled upon the Earth at some point in the past.

See <<http://www.nationalgeographic.com/museum/exhibitions/bizarrebeasts.html>>.

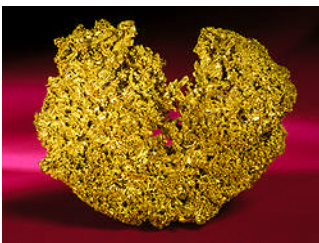
With Permission from the National Geographic Society ©



The Helicoprion shark, a whorl-toothed wonder inhabiting Earth's oceans 250 million yrs. ago
Photograph by Bruce Wendorff

GOLD Join the Rush to Gold, November 18, 2006–August 19, 2007. In the glittering new exhibition **Gold**, at the American Museum of Natural History in New York City, ancient coins, sunken treasure, trophies, jewelry, and other cultural artifacts, along with extraordinary natural specimens, tell the story of this enduring symbol of wealth and success. Among the many intriguing special features are an entire room completely covered in a single ounce of real gold flattened to exquisite thinness. There is a scale that raises the question: Are you worth your weight in gold? Guess the amount of gold ore found in a boulder. Pan for nuggets.

The spectacular exhibition will explore the historical fascination with this enduring icon of wealth, beauty, and power. Showcasing a vast array of extraordinary objects gleaned from the geology and cultural anthropology holdings of major museums and private collections around the world, **Gold** will present the fascinating scientific and cultural story of this rare and prized element. The influence of gold throughout history will be examined through the currency of ancient civilizations, displays on the Gold Rush that shaped the American West, and contemporary pop culture items. Historical exhibition highlights will include enormous nuggets of gold such as the famous Lydian (now Turkey), gold textiles, and gleaming pre-Columbian jewelry and other objects from the Museum's own collection.



Gold, Colorado
© AMNH/Denis Finnin

Latrobe Nugget, a specimen of rare natural crystallized gold, gold bars, rare doubloons retrieved from sunken Spanish galleons, the first gold coins minted in ancient Lydia (now Turkey), gold textiles, and gleaming pre-Columbian jewelry and other objects from the Museum's own collection.

Visitors will experience firsthand the alluring splendor of the finest gold specimens on Earth and learn how gold is located, mined, processed, and turned into both beautiful and useful objects. They will discover that gold has amazing physical properties such as extreme malleability, reflectivity, and conductivity that make it invaluable for technological uses from telephones and televisions to satellite circuitry and astronauts' visors.

Gold is organized by the American Museum of Natural History, New York, in cooperation with The Houston Museum of Natural Science, and supported by The Tiffany & Co. Foundation, with additional support from American Express® Gold Card Events.

Admission Adults \$25, Senior and Student \$20, Child \$16.
See <http://www.amnh.org/exhibitions/gold/?src=e_h#>

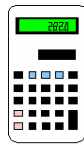


Mixtec Bell
Circa 500 years ago
Oaxaca, Mexico
© AMNH / Craig Chesek



Byzantine Coin
© AMNH / Craig Chesek

Notice! All text, images, are copyright property of the American Museum of Natural History and its programmers unless otherwise noted. They may be used for the personal education of website visitors. They may not be placed in the public domain. Commercial use is prohibited unless pursuant to a written license signed by the Museum.

**WEB SITES**

Add up the fun

By Wendell C. Mohr

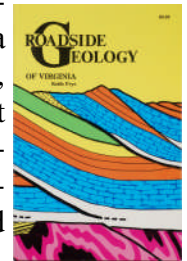
Everything Fossils, at <http://www.fossils-facts-and-finds.com/> is by teachers Doug and Claudia Mann of Evergreen CO, and is site for teachers, students and home schoolers. There are simply too many branches on the tree to list here. Although there are a lot of somewhat annoying commercial links, (Ever looked at your newspaper lately for the amount of story versus ads?), this is a comprehensive beginner's site and has a lot of activities. Cutting and pasting and word search activities are safe but I would caution against the experimental volcano model for kids. Only with close Adults attention! The fossil ivory hunters have a very difficult time freeing the mammoth tusks in Siberia. Of course, in Alabama, the Tuscaloosa. The early Archaeopteryx gets the Annelid



David Jégou Mineral Collector, <http://fuzzy.kaist.ac.kr/~david/special.html>, is the personal web site of a collector. The URL would indicate that it is associated with kaist, the Korean Advanced Institute of Science and Technology, and the "kr" is Korean but content includes French sites. Anyway his Gallery has over 100 photos of his collection. Good articles, some under construction, include Korean Amethyst Scepters, "Luck at the flea market", The Tae-Hwa mine (Excellent), Col de La Madeleine Savoie France, Staurolites in Brittany, and the Wolak Mine. He offers specimens for exchange. Why not make a pen pal and trade? Click on his name for his E Mail. There is also the ubiquitous Links area. Strange isn't it that prospector's picks and babies both come without instructions. A collector, Albert Einstein, found a huge beryl. "Is it of high quality?", asked another collector? "Relatively", he said.



Mountain Press Publishing Company, <http://mountain-press.com/> Offers many publications, the best of which are the geology series. Search "Geology" in the "Contains" box for a listing of their books of interest to the likes of us. You will find the Roadside Geology books, and Geology Underfoot series. Their latest, Roadside Geology of Ohio was just released Oct 31st. Of course they have many other titles heavily western U.S. in content. I find the Roadside History books of value while we have vacationed. This is only to bring these to your attention and is not an endorsement to purchase. You may find other sellers to have discounted prices. I had a fire in my library. Lost both of my books. And I hadn't colored one of them!

**UPCOMING SHOWS:**

November 17-19 9th Annual Carnegie Gem & Mineral Show, Carnegie Museum of Natural History, 4400 Forbes Ave., Pittsburgh PA. (Preview party Nov 16th.) Open Nov. 17 & 18, 10 AM-5 PM, Nov. 19, Noon-5 PM. Information: Phone 412 622 3391 or see <http://www.carnegiemnh.org/minerals/gemshow/home.htm>.

November 18-19, Sat. 10 AM-6 PM, Sun. 10 AM-4 PM, Northern Virginia Mineral Club Annual Gem, Mineral, and Fossil Show, George Mason University, Fairfax VA, Student Union II Bldg., Rte. 123 and Braddock Rd. Adults \$4, Seniors (65+) \$2, Teens (Ages 13-17) \$2, Under 12 free. Contact Tom Taaffe, (703) 281-3767, E Mail rockcllctr@aol.com.

November 18-19, Sat., 9 AM-6 PM, Sun., 10 AM-5 PM, 40th Annual Gem & Mineral Show and the 56th EFMLS Convention sponsored by the G&M Society of the Palm Beaches. Admission \$7. Southern Florida Fairgrounds, West Palm Beach FL. EFMLS Annual Meeting Friday, Nov. 17th. Contact Deb Bengtson, (561) 432-2953 gemandmineral@bellsouth.net. See www.gemandmineral.cc and/or <http://www.amfed.org/efmls/convention.htm>.

December 9, Sat. 10-4:30. Fall Festival of Fine Minerals, Fossils, & Jewelry. Days Hotel, 9615 Deercro Road, Timonium MD, just north of Towson/Baltimore I83, Exit 17, Padonia Road. Commercial show by five local dealers, admission free.

Mar 10, 11, 2007, OUR SHOW. Four months is none too soon to be planning for your exhibit in the show and what volunteer jobs you will help to fill.

BOARD OF DIRECTORS

President-Scott Braley, 3813 Hillcrest Drive, Annandale VA 22003-2311	301 305 1193
Vice President-Rod Towers, 19609 Gunners Branch. Rd., Germantown MD 20876-2738	301 972 1264
Secretary-Robert Winfield, 544 Beall Avenue, Rockville MD 20850-2105	301 251 6671
Treasurer-Juan Proaño, 8624 Bunnell Drive, Potomac MD 20854-3545	301 299 2034
Junior Advisor-Vacant	
Field Trip Chairperson-Anita Lizas James, 4874 Chevy Chase Dr., Chevy Chase MD 20815-6421	301 652 5527
Membership Chairperson-Nancy Ballard, 16812 Baederwood Lane, Derwood MD 20855-2011	301 926 7374
Show Chairman Pro-tem-Scott Braley, 3813 Hillcrest Drive, Annandale VA 22003-2311	301 305 1193
Property Manager-Joel Rosen, 833 Rampart Way, Union Bridge MD 21791-9325	410 775 7937
Immediate Past President-George Durland, 8600 Bunnell Drive, Potomac MD 20854-3545	301 299 8213
EFMLS Liaison-Wendell Mohr, 9509 Emory Grove Road, Gaithersburg MD 20877-3501	301 926 7190
Bulletin Editor- Wendell Mohr, 9509 Emory Grove Road, Gaithersburg MD 20877-3501	301 926 7190

Charter Member: Dan Spielman; Life Members: David Ballard, Nancy Ballard, Jack Busch, Larry Harrison, Anna Marcus, Wendell Mohr, Charlotte Morrison, Dan Spielman, and Paul Vance

Society Address: GLMS of Montgomery County MD., Inc.
P. O. Box 444, Gaithersburg MD 20884-0444

All Society correspondence is to be sent to this address except that which is intended for the Rockhounder and its editor. Such items are to be sent to the editor's home address.



Permission to copy material printed herein is granted provided credit is given.



FIRST CLASS MAIL
DATE MATERIAL
TIMESENSITIVE

THROCKHOUNDER
Gem Lapidary and Mineral Society
Of Montgomery County Md. Inc
Wendell Mohr Editor
9509 Emory Grove Road
Gaithersburg MD 20877 - 3501

